

Back Trailer Hitch



Model: JHSAZQ690 Model: JHSAZQ707 Model: JHSCZQ750



Model: JHSFHQ



Model: JHSXHQ



Model: JHSLHQ



Model: JHSXHQ



Model: JHSVHQ



Model: JHSDZQ



Model: JHSVZQ



Model: JHSWZQ



Model: JHSHKQ



Model: JHSNHQ



Model: JHSHKQ



Model: JHSYHQ



Model: JHSWHQ



Model: JHSFZQ



Model: JH-TGQY



Model: JHSPHQ




Model: JHSFHQ



Model: JHSMHQ

Front and Back Hitch Assembly

Model: JHHTHQ



Usage Display



Trailer hitch testing machine

AGV Hitch



Model: JH-AGVQY
 Dimensions (WxDxH) :
 140x120x31
 Traction: ≤6000 KG

Product features:
 This product is used in various logistics industries and is made according to the production of hidden AGV, whose main purpose is to realize the connection between AGV and equipment.

Wheel Ground Brake



Model: JHYJDST



Model: JHYJDST

Dimensions (WxDxH): 240x150x160

Load capacity: ≤300KG

Product features:

Simple structure of the ground brake, easy to operate, reliable parking performance, large distance from the ground when retracted.

Folding wheel ground brake



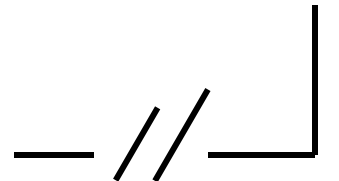
Model: JHSUDST

Dimensions (WxDxH): 270x120x100

Load capacity: ≤ 300KG

Product features:

The main body is made of high-quality carbon structural steel precision casting, which has a reasonable structure, reliable performance, simple and safe operation, and is durable. There is an anti detachment hook device inside the cavity, and the traction hook is forged from special steel, which is more sturdy and durable. It is safe to use, and the surface is acid washed, phosphated, and electrostatically sprayed, making it less prone to corrosion and rust, thereby increasing its service life.



Polyurethane

Introduction:

Polyurethane is a polymer with many repeated amino ester groups (-NHCOO-) on the main chain of the polymer structure, collectively referred to as polyurethane.

Polyurethane elastomers can be divided into three categories based on their processing methods:

- (1) CPU-cast polyurethane,
- (2) TPU-thermoplastic polyurethane,
- (3) MPU-mixed polyurethane.

The CPU is a viscous liquid before processing and molding, and its products can be pressurized and vulcanized under normal pressure; Can be heat cured or room temperature cured; It can be poured manually or continuously by machine. So casting molding is particularly suitable for the production of large elastic products.

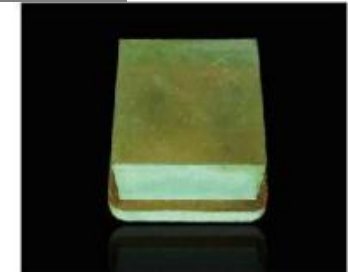
The usual molding methods for TPU products are similar to plastic processes, such as injection molding, extrusion, and rolling;

MPU uses universal rubber processing equipment to produce products

Polyurethane Block



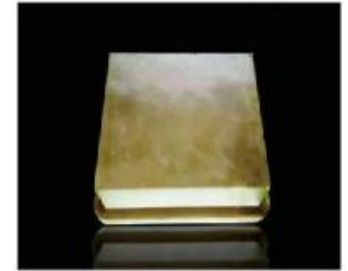
Size: 25x25



Size: 30x30



Size: 40x40



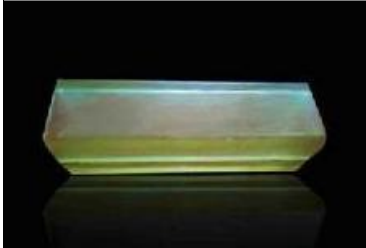
Size: 50x50

Polyurethane Square Tube 30



Size: 30x30x230

Polyurethane Square Tube 40



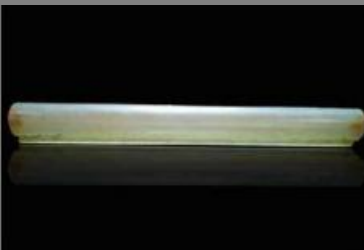
Size: 40x40x200

Polyurethane Square Tube 40



Size: 40x40x500

Lever



Size: 30x30x310

Polyurethane 30 buckle strip



Size: 30x30x500

Polyurethane 40 buckle strip



Size: 40x20x600



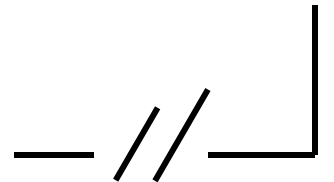
Block Tube

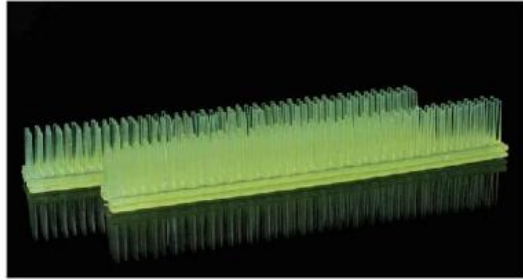
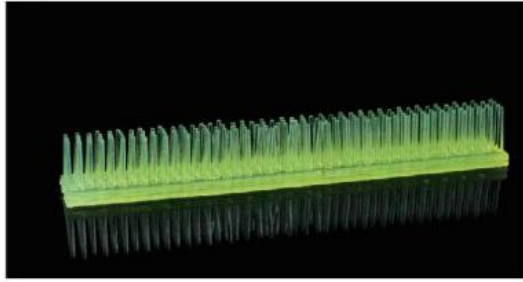


Polyurethane caster shock absorber block



Guanglong Square Tube



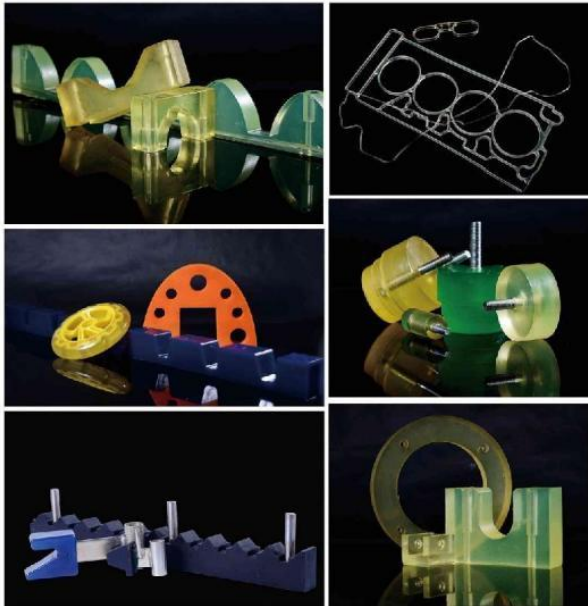


Dimensions: 350*360*480

Product features:

Made of high-density polyurethane casting, widely used in workplace tools, featuring non-fixed positioning function, corrosion resistance, anti-aging, oil resistance, and long service life.

Sample Pictures:



Characteristics of polyurethane elastomers

1. Excellent wear resistance

The wear resistance of polyurethane elastomers is very outstanding, generally about 3-5 times that of natural rubber, and they are known as "wear-resistant rubber";

2. Wide range of hardness

The hardness range of polyurethane elastomers is low, around shore A10, and high hardness can reach shore D85, extending from the hardness of rubber to the hardness range of plastic. What is more valuable is that polyurethane elastomers have good rubber elasticity and elongation at high hardness;

3. High strength

Under the hardness of rubber, the tensile strength and tear strength of polyurethane elastomers are much higher than those of general rubber; Under the hardness of plastic, their impact strength and bending modulus are much higher than those of plastic;

4. Oil resistance

The cream properties of polyester polyurethane elastomers are not inferior to nitrile rubber and comparable to polysulfide rubber;

5. High bearing capacity

Due to the fact that polyurethane elastomers can increase hardness while maintaining rubber elasticity, thus achieving high load-bearing capacity, which cannot be compared to other rubbers;

6. Good vibration absorption performance

The effect of polyurethane elastomer on alternating campsites exhibits a significant hysteresis phenomenon, during which a portion of the energy from external forces is consumed and converted into thermal energy within the polyurethane elastomer. Therefore, polyurethane elastomers have significant vibration absorption properties, also known as damping properties.

7. Low temperature resistance performance

Polyurethane elastomers have good low-temperature performance, and brittle blockages are generally very low (-50 °C -70 °C). Some formula varieties have catalytic temperatures below -70 °C, so polyurethane elastomer products are particularly suitable for cold environments;

8. Radiation and ozone resistance

Polyurethane has outstanding radiation and ozone resistance properties among polymer materials;

9. Mold resistance performance

Polyether polyurethane has good resistance to mold, with a grade of 0-1 and basically no mold growth.

10. Biomedical performance

Polyurethane materials have excellent biocompatibility. Acute and chronic toxicity tests and animal experiments have confirmed that medical polyurethane materials are non-toxic, have no distortion effects, and have no adverse side effects such as allergic reactions.

Polyurethane high elasticity silent casters

Bracket:

Double bead disc structure, high-quality steel plate, advanced rivets, with galvanized surface as the main material.

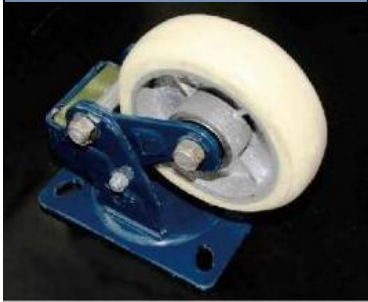
Wheels Material: Core polyurethane

Wheel surface hardness: 92 ± 3 shore A

Bearing type: sliding bearing

Temperature range: -30 °C~80 °C

Polyurethane high elasticity fixed casters



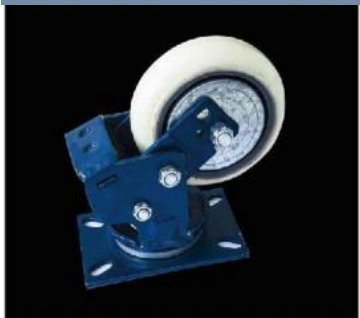
Polyurethane high elasticity brake casters



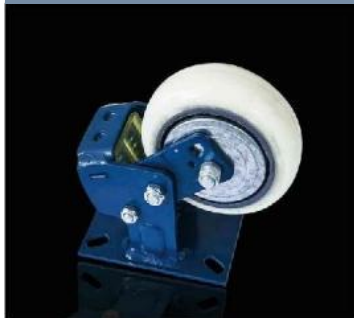
Polyurethane high elasticity movable casters



Tablet activity wheels casters



Tablet fixed wheels casters



Wheel set characteristics:

A shock-absorbing combination of two sets of metal springs and one set of PU springs, with the two sets of metal springs working under light load (empty vehicle); When loading, two sets of metal springs and one set of PU springs work simultaneously; The reasonable force distribution of the three sets of springs has a more obvious shock absorption effect, avoiding the use of the same springs for both empty and loaded products in the past

The advantages of segmented force:

1. Wide shock absorption range.
2. Reduced impact and increased service life by more than 40%.

Wheel features:

KU wheel: heavy load, low pollution, good wear resistance when vulgar; The disadvantage is a decrease in durability at medium to high speeds

AKU wheel: heavy load, good rebound performance, free allogenic polymer material, good heat dissipation performance, thus reducing the internal heat of PU during operation, improving internal heat performance, more labor-saving, durable, and quieter, integrating the advantages of KU and RZ.

RZ wheel: made of natural rubber, durable, labor-saving, and quiet; The disadvantage is that it is not resistant to acid and alkali, and can contaminate the ground.
Applicable industries: prevention, dyeing, automotive industry and other places where power traction ≤ 12km/h



QA Series driving wheel



Wheel surface: High performance polyurethane elastomer cast through chemical reaction, with a hardness of 95 ° Shore A, high dynamic load bearing capacity, low walking noise, and low rolling resistance, which can effectively protect the walking surface. The wheel surface is very wear-resistant, with high cutting and tear resistance, no marks, no staining, and excellent bonding effect with the wheel body.
Wheel body: Made of 45 steel welding or cast iron die-casting.
Type of shaft hole: The installation hole adopts bolt connection method.

QB Series driving wheel



Wheel surface: Made of high-quality polyurethane elastomer cast through chemical reaction, with a hardness of 95 ° Shore A, high dynamic load bearing capacity, low walking noise, and low rolling resistance, it can effectively protect the walking surface. The wheel surface is very wear-resistant, with high cutting and tear resistance, no marks, no staining, and excellent bonding effect with the wheel body.
Wheel body: Made of 45 steel welded and processed.
Type of shaft hole: The hole key groove is made according to the 6885DIN standard.

QC Series driving wheel



Wheel surface: Made of high-quality polyurethane elastomer cast through chemical reaction, with a hardness of 93 ° Shore A, high dynamic load bearing capacity, low walking noise, and low rolling resistance, it can effectively protect the walking surface. The wheel surface is very wear-resistant, with high cutting and tear resistance, no marks, no staining, and excellent bonding effect with the wheel body.
Wheel body: Made of 45 steel or gray cast iron die-casting.
Type of shaft hole: The hole key groove is made according to the 6885DIN standard.

DA Series Guide wheel



Wheel Face: Made through chemical reactions, this high-performance polyurethane elastomer has a hardness of 93°Shore A, produces low walking noise, has low rolling resistance, effectively protects the walking surface, is very wear-resistant on the wheel surface, has high resistance to cutting and tearing, is markless, non-staining, and has excellent adhesion to the wheel body. Wheel Body: Made of 45 steel. Bearing Type: Two pressed-in ball bearings, lubricated with high-quality grease.

DB Series Guide wheel



Wheel surface: Made through chemical reaction casting of high-performance polyurethane elastomer, with a hardness of 96 °Shore A, low walking noise, small rolling resistance, effectively protecting the walking surface, the wheel surface is very wear-resistant, with high resistance to cutting and tearing, no marks, non-staining, and excellent bonding effect with the wheel body.
Bearing type: High-quality ball bearings, lubricated with high-quality grease.

DC Series Guide wheel



Wheel surface: Made through chemical reaction casting of high-performance polyurethane elastomer, with a hardness of 96 °Shore A, low walking noise, small rolling resistance, effectively protecting the walking surface, the wheel surface is very wear-resistant, high resistance to cutting and tearing, no marks, non-staining, and excellent bonding effect with the wheel body.
Bearing type: High-quality ball bearings, lubricated with high-quality grease.

GA Series Roller Wheel



Wheel Face: Made through chemical reaction casting, high-performance polyurethane elastomer with a hardness of 93°ShoreA, low walking noise, small rolling resistance, effectively protects the walking surface, very wear-resistant on the wheel surface, high resistance to cutting and tearing, no marks, no staining, excellent adhesion with the wheel body. Wheel Body: Made of 45 steel. Bearing Type: High-quality ball bearings, lubricated with high-quality grease. High chemical resistance - resistant to corrosion by various corrosive substances. Temperature resistance: -25°C to +70°C, short-term maximum +90°C. Maintenance-free under normal use conditions.

GB Series Roller Wheel

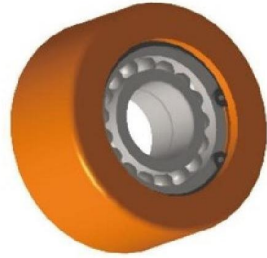


Wheel Surface: Made of high-quality impact-resistant nylon 6, with a hardness of 70° Shore D. Wheel Body: Extremely low rolling resistance, easy to roll on smooth surfaces, very wear-resistant, natural white. Bearing Type: Ball Bearings: Two pressed-in ball bearings, using high-quality lubricating grease. Other Features: High chemical resistance—resistant to corrosion from various corrosive substances. Temperature resistance: -25°C to +80°C. Maintenance-free under normal operating conditions.

Wheel platform driven wheel



Idler



PVC lifting equipment walking wheel



Tractor guide wheel



Fixed roller bed driving wheel



Wheel platform active wheel



Walking drive wheel



Fast Wheel For Flat Car



Elevator wheel



Fixed roller bed driving wheel



Suspension equipment active wheel



EShuttle walking wheel



Sled Sliding Wheel



Wheel platform heavy-duty driven wheel



Fixed roller bed driving wheel



Conveyor line main drive wheel



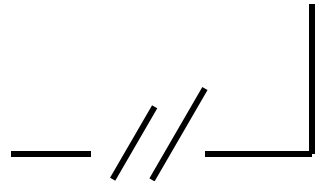
Chain polyurethane wheel



Wheel platform heavy-duty active wheel



Elevator walking wheel



Stacking Cap

Features:

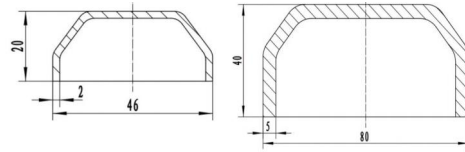
Stamping, easy welding, impact resistance, standard size, matching use

40x40/80x80



Overall dimensions (WxDxH): 46x46/80x80

Installation dimension

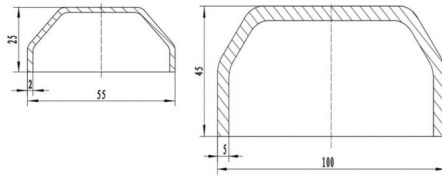


50x50/100x100



Overall dimensions (WxDxH): 46x46/80x80

Installation dimension



40/50 conical



Overall dimensions (WxDxH):
40x40x35/50x50x35

Installation Method: welding



Usage Display

Pull Pin



Simple pull pin



Self locking pull pin



Short pull pin



WJ-01



WJ-02



WJ-03



WJ-0301



WJ-04



WJ-05



WJ-06



WJ-07



WJ-08



WJ-15



Square Pull pin



Long and Short Pull Pin

Slide bolt latch

Slide Bolt latch: Spring Optional



handguard slide bolt latch



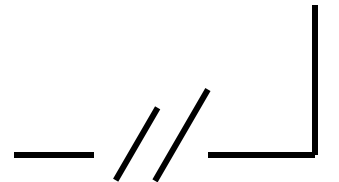
Slide Bolt latch



Usage Display



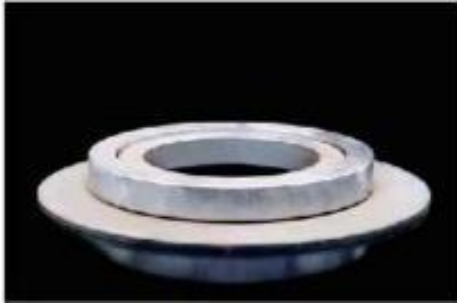
Hinge



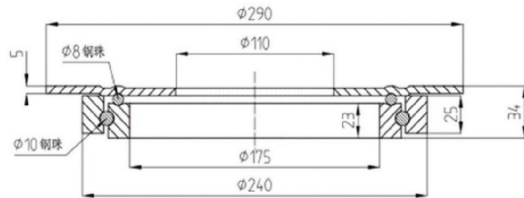
Turntable

Product features:

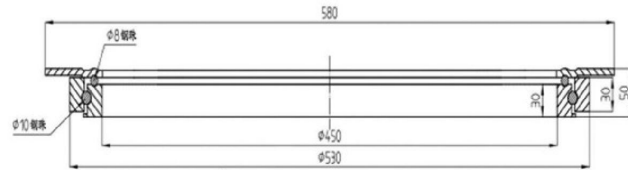
The main body is made of 45# steel, forged and then precision machined, with flexible rotation, low noise, and long service life.



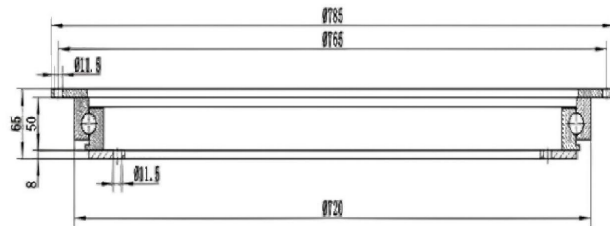
Dimensions: 290
Installation Dimensions:



Dimensions: 580
Installation Dimensions:



Dimensions: 785
Installation Dimensions:



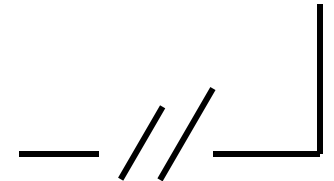
Mechanical support



Dimensions (WxDxH): 40x40x35
Installation size: Welding

Product features:

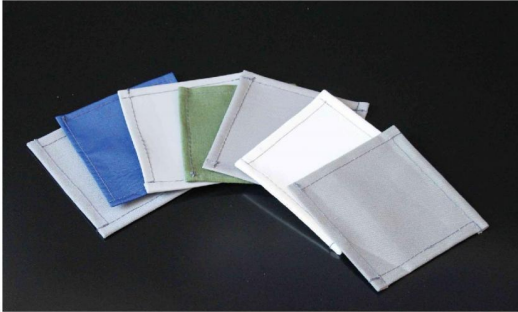
Adds an extra layer of protection for appliance support, preventing accidents in case of gas spring failure.



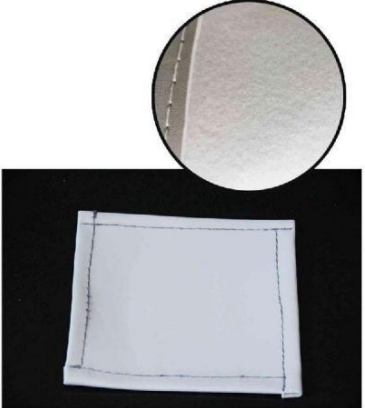
Packing Series

Software packaging (protecting the inner material)

We offers a wide variety of cloth types including canvas, tarpaulin, DuPont cloth, PU leather, waterproof silk fabric, PVC grid fabric, fiberglass cloth, and silicone-coated canvas.



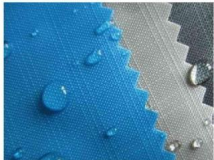
Leather suede



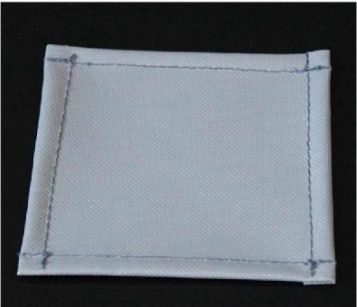
DuPont cloth



Oxford Cloth



PVC mesh fabric



Usage Display



EVA

Features:

Water resistance: Closed-cell foam structure, non-absorbent, moisture-proof, and good water resistance.

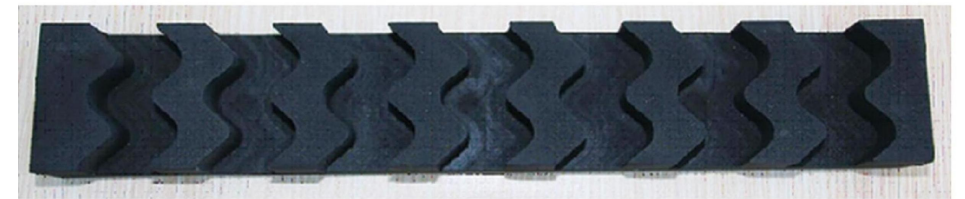
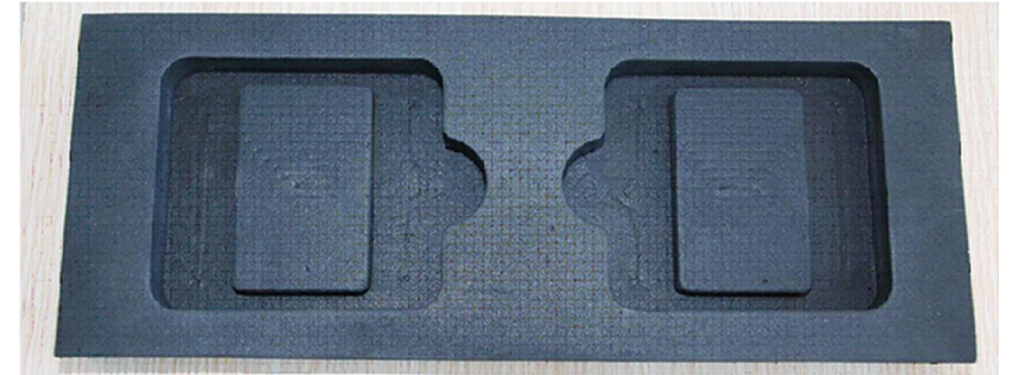
Corrosion resistance: Resistant to corrosion from seawater, oils, acids, alkalis, and other chemicals, antibacterial, non-toxic, odorless, and non-polluting.

Processability: Seamless and easy to process with heat pressing, cutting, adhesive application, and lamination.

Vibration resistance: High resilience and tensile strength, high toughness, providing excellent shock absorption and cushioning properties.

Insulation: Good thermal insulation, excellent performance in keeping warm against cold and low temperatures, capable of withstanding extreme cold and exposure to sunlight.

Sound insulation: Closed-cell foam structure, providing good sound insulation effect.



Non-standard Instrument

Rotary instrument



Box type instrument



Positioning device



Application:

Widely used in automotive parts, electronic and electrical industry warehousing and transportation.

Structural features:

The main body is made of square tubes and iron plates welded together, with the surface treated and painted, equipped with a rotating mechanism and standard parts such as traction and casters.

1. The unique rotating design facilitates the loading and unloading of items, greatly saving time for taking and sending items.
2. The tool is equipped with a positioning lock pin, eliminating worries about the workpiece falling and being damaged due to the rotation of the rotating mechanism during transportation.
3. Simple operation, easy to use.

Application:

Widely used in the storage and transportation of automotive parts, electronic and electrical industries.

Structural Features:

1. Uniform specifications, fixed capacity, easy to count.
2. Accurate positioning, effectively protects the workpiece from damage.
3. Stacking bowl design, safe and stable load-bearing.
4. Stackable, making full use of space, achieving three-dimensional storage.



Non-standard Instrument

Corner push trolley (90-degree turn trolley)



This product is a new type of logistics transfer car, which is characterized by being able to achieve a 90 degree turning function by controlling the two directional wheels on the rear side through a linkage mechanism through front traction, so that the transfer car can move laterally. In most production lines of factories today, the transfer car only realizes the function of transfer, while this type of car can achieve functions such as direct online distribution, which can reduce the number of worker transfers and labor intensity, thus solving the problems of narrow space and insufficient rotation space of the car, saving costs, saving time and creating efficiency. It is widely used in the logistics field.

Synchronous trajectory car

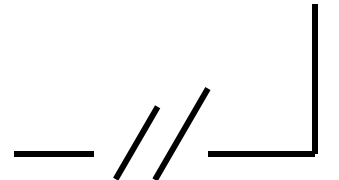


The main body is made of steel profiles and steel plates, which are welded together to form a load-bearing chassis. It is equipped with a special turntable made by Jiahong and polyurethane casters, which are firmly integrated with the chassis through a linkage mechanism. The front traction is used for guidance, achieving co-trajectory rotation and overcoming the difficulty of turning due to limited space. This small vehicle has a small turning radius, is lightweight and stable, has a strong load-bearing capacity, moves quickly, saves time and effort, and greatly facilitates transportation in confined spaces.

Brake car



This product is a new type of mechanical brake transfer cart, which integrates the transfer cart and the ground brake (elevator) into one special transfer cart. Its feature is that it can be controlled by the front traction through the linkage mechanism to realize the self-locking function of the two directional wheels at the rear, thus achieving the stop of the transfer cart. The commonly used ground brakes (elevators) on the market are mostly used with 5-inch casters/6-inch casters, which are prone to damage during use. This product is developed according to market demand and usage characteristics, equipped with a mechanical brake mechanism, which is equipped with brakes and contact brake pedals. The features are simple operation, firm braking, and long service life, etc., which are widely used in the logistics field.



Standard Instrument

Traction pallet truck



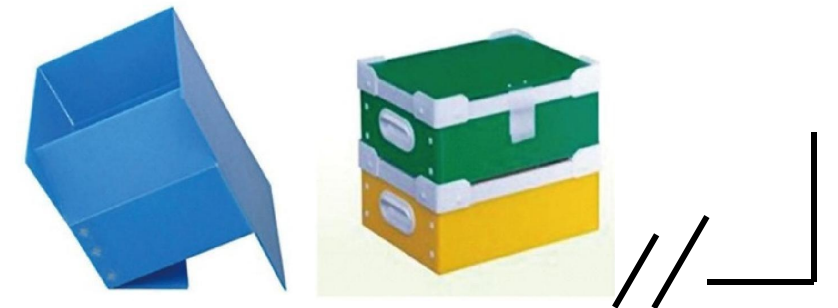
Foldable net cage



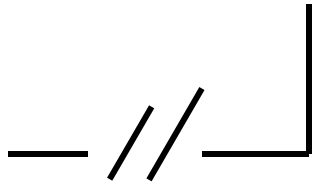
Metal iron plate box



Hollow board turnover box



Usage Display



Assembled equipment

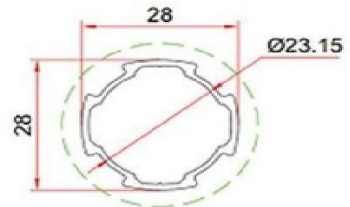
Aluminum alloy wire rod profile



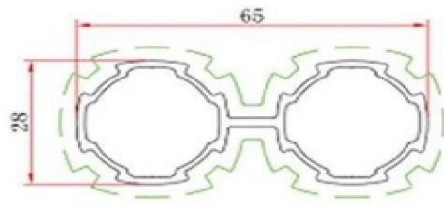
Aluminum wire rod profile connector



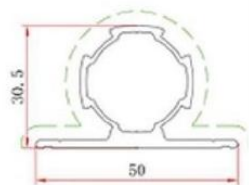
Aluminum wire rod profile Cap



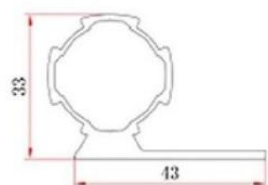
Single tube



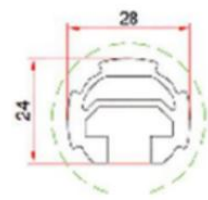
Double tube



Bilateral plates



Single-sided board



With Slot

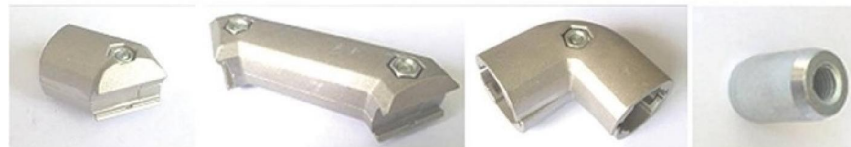


GBG10.028.W.02

GBG10.28.N.02

GBG10.028.S.02

GBG10.028.H.02



GBG 10.028.45.02

GBG10.028.Z.02

GBG 10.028.90.02

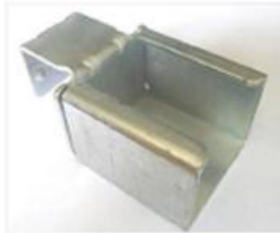
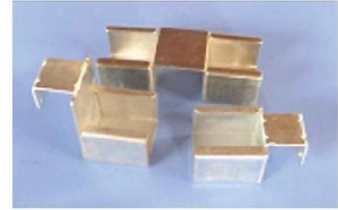
GBG11.028.ZT.01



Usage Display



Fluent Bar Connector



GBG11.028.WDG.01

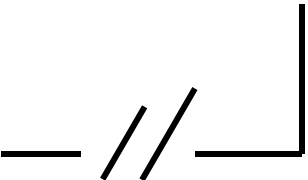


GBG11.028.GG.01



GBG11.028.SG.02

Material: Carbon Steel
Surface treatment: colored zinc plating
Color: Colorful
Purpose: Used for end connection of aluminum alloy fluent strips.



Logistics Equipment

High shelves

- Cantilever shelves

The cantilever rack is composed of cantilevers installed on the columns and is movable. It is widely used for storage and use of pipes and plates.



- Shuttle rack

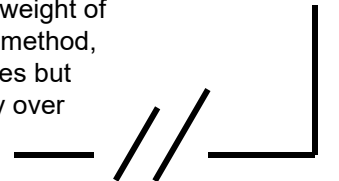
The shuttle rack system is a high-density storage system composed of racks, trolleys and forklifts. This efficient storage method is designed to improve the utilization of warehouse space and bring customers a new storage choice!

High sensitivity storage, high warehouse utilization ; high work efficiency, significantly reducing waiting time for operations. Flexible operation mode, goods can be stored and retrieved on a first-in-first-out or last-in-last-out basis; high safety factor, reducing collisions between shelves and forklifts, improving safety production rates ; relatively low lighting requirements, compared to other types of shelves, the overall investment is less. Flow-type shelves are composed of steel plates and roller slides, widely used in assembly production lines and sorting areas of logistics distribution centers, especially when combined with digital sorting systems, significantly improving material delivery efficiency and reducing errors. Convenient for first-in-first-out operations, enhancing efficiency.



- Push-back racks

Also known as dynamic pallet racks or inclined racks, have evolved from pallet racks. They operate on the principle of combining tracks and pallet trucks, with the tracks having a slight incline (around 3 degrees). This design takes advantage of the weight of the goods, allowing pallets to be stored at one end and accessed from the other, with a first-in, last-out inventory management system. This type of rack is suitable for storing large quantities of a few types of goods, offering high space utilization and flexible and convenient access. The total depth of the rack should not be too deep, generally within 6 pallet depths, otherwise, the space would be significantly compromised due to the interlocking of pallet trucks. The weight of a single pallet load is usually within 1500kg, and the rack height is generally below 6 meters. Using a pallet access method, the goods are managed in a first-in, last-out manner, making it suitable for storing goods that come in large quantities but few varieties. Drive-in racks (also known as drive-through racks) can increase the utilization of warehouse space by over 30%, and are widely used in cold storage and industries such as food and tobacco.



High shelves

- Layered shelves

It is a kind of storage shelf, which is distinguished and named according to the load capacity of the shelf. It can be divided into light shelf and heavy shelf.

The shelf-type rack adopts a structural form combining crossbeams and shelves, typically supporting loads of 150 kg-600 kg per level, with different specifications and sizes of crossbeam sections selected based on load capacity. Columns, crossbeams, and shelves can all be freely assembled and disassembled, with each level freely adjusted at a pitch of 50 mm.

Application:

In the operation environment of manual labor, manual handling, storage and selection.



- Overhead shelves

This is a simple rack that makes full use of space. An intermediate loft is built on an existing rack or work area to increase storage space. The loft floor can generally accommodate light bulbs and small to medium-sized items or goods with long storage periods, which can be lifted using forklifts, conveyor belts, elevators, electric hoists, or lift platforms. Generally, light-duty trolleys or pallet-handled trolleys are used for operations on the loft.



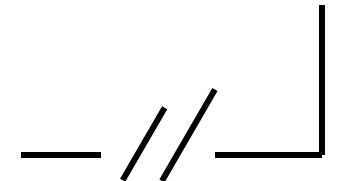
- Flow shelves

Fluent type is a specialized rack composed of steel plates and roller guides widely used in assembly production lines and sorting areas of logistics distribution centers especially when combined with digital sorting systems significantly improving material delivery efficiency and reducing errors facilitating the first-in-first-out principle and enhancing efficiency.



- Through shelves

Using the pallet storage and retrieval mode, goods are stored in an advanced-first-out manner, suitable for storing goods with fewer varieties and larger batches. The space utilization rate of through-type racks (drive-in racks) can be increased by more than 30%, widely applied in cold storage facilities and industries such as food and tobacco.



High shelves

- Heavy-duty shelves

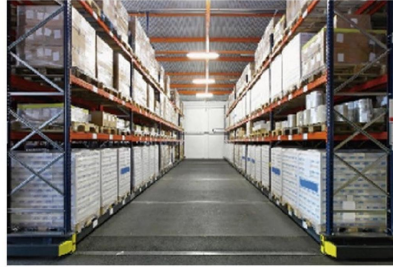
Also known as beam-type shelves or storage rack-type shelves, they belong to the category of pallet racks and are the most common form of rack in various domestic storage rack systems. They feature a fully assembled structure consisting of columns and beams, which is simple and effective in design. Depending on the characteristics of the storage unit container equipment, functional accessories such as shelves, steel layers (wood layers), metal wire mesh layers, storage cage guides, and oil drum racks can be installed to meet the storage needs of different unit container equipment types.

The heavy-duty rack is composed of columns, cross beams, braces, inclined braces, and self-locking bolts, effectively preventing rack instability caused by bolt loosening; the cross beams are made of specially designed cold-rolled P-type closed beams; this structure features simplicity and reliability, light weight, strong load-bearing capacity, and low cost; the column clamps are equipped with specially designed safety pins when connecting to columns, ensuring that the cross beams will not fall off under external impact; the shelves are made of international strip-type shelves, featuring strong load-bearing capacity, wear resistance, easy replacement, and low maintenance costs

- Car 4S store shelves

According to the characteristics of automobile brands, warehouse area and requirements, the shelves of automobile 4S stores are generally combined (loft shelves + Heavy-duty shelves), designed for the characteristics and storage forms of automotive parts; professional car 4S store shelves suitable for their storage: including small item shelves, medium item shelves, large item shelves, glass shelves, shock absorber shelves, muffler shelves, fuel shelves, bumper shelves, etc.; each unit shelf can support loads ranging from 100 to 500 kg per layer.

Aesthetic appearance; professional storage; high utilization rate.



Conveyor drum

Roller conveyors can be used to form complex logistics conveying systems by combining multiple roller lines and other conveying equipment or special machines, meeting various technological requirements. Accumulating roller conveyors can be used to achieve the accumulation and conveying of materials. Roller conveyors have a simple structure, high reliability, and are easy to use and maintain.

Specifications

The internal width of the roller conveyor is specified by the customer and can be made to meet customer requirements. The standard internal radius for standard turns is 300, 600, 900, 1200mm, etc., but other special specifications can be used according to the needs of Anhu. The diameter of the straight roller used is 38, 50, 60, 76, 89mm, etc. The taper of the turning rollers will be designed according to the weight, shape and size, and line speed of the transported object.



Rack material: Carbon steel with powder coating, stainless steel, aluminum profiles.



Curved roller conveyor

Non powered roller conveyor

- **Product Introduction**

The unpowered roller conveyor is also called the unpowered roller conveyor. The roller can be divided into powered roller conveyor and unpowered roller conveyor according to whether there is power or not

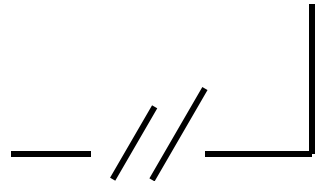
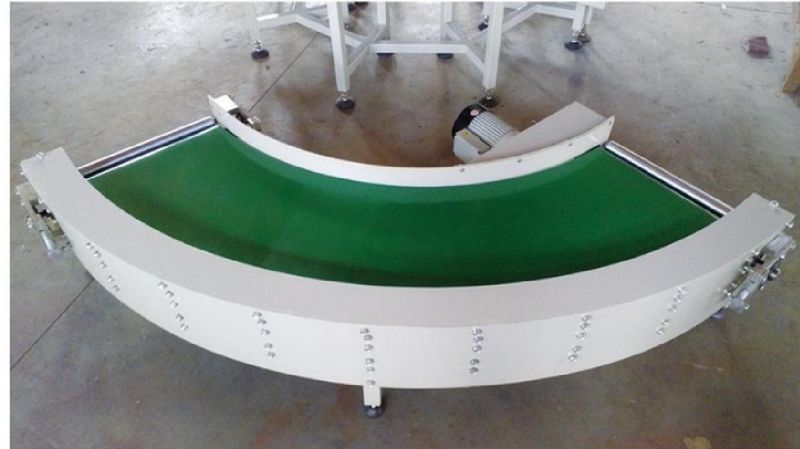
The force roller consists of a non-powered roller cylinder assembly, aluminum side plate, sheet frame, pull rod and support seat. Its working principle is to push or squeeze the workpiece by hand on the free roller cylinder.

- **Product features**

The non-powered roller conveyor can significantly reduce the intensity of handling and loading operations, improving work efficiency, and can be used independently or in any combination, regardless of the weight or size of the items, making it convenient for transportation. The non-powered roller conveyor, especially the gravity roller conveyor, is favored for its simple structure, stability, reliability, durability, flexible installation, and low cost, requiring no power to operate, thus gaining widespread adoption and being extensively used in first-in-first-out type automated warehouses.

can produce 90 degree curved conveyor, 180 degree curved conveyor, and 270 degree curved conveyor. Press it again to lose

The delivery methods can be divided into single chain wheel drive roller conveyor, double chain wheel drive roller conveyor, O-belt drive roller conveyor, electric roller drive conveyor, etc. According to its structural form, it can be divided into horizontal, climbing, turning, spiral and other conveying forms. According to their materials, roller conveyors can be divided into carbon steel spray coating, stainless steel, aluminum alloy and other materials. At the same time, roller conveyors have strong conveying capacity, long conveying distance, easy disassembly and assembly, simple structure and easy maintenance, and can easily implement programmed control and automated operation. They are suitable for various industries such as electronics, hardware, machinery, chemical industry, food, forestry, mining, books, supermarkets, rubber, etc. At the same time, non-standard design and production customization can be carried out according to customer requirements.



Belt conveyor line

Belt conveyor line, also known as belt conveyor, is the use of continuous or intermittent movement of conveyor belts to transport various items of different weights and weights. It can transport various bulk materials as well as transporting various types of cardboard boxes, packaging bags, and other small items with a wide range of uses.

Introduction to Belt Conveyor Line

The materials of the conveyor belt of the belt conveyor include rubber, silicone, PVC, PU and other materials. In addition to being used for conveying ordinary materials, it can also meet the transportation of materials with special requirements such as oil resistance, corrosion resistance, and anti-static. Using specialized food grade conveyor belts, it can meet the requirements of industries such as food, pharmaceuticals, and daily chemical products.

The structural forms of belt conveyors include groove belt conveyors, flat belt conveyors, climbing belt conveyors, turning belt conveyors, and other forms. Accessories such as lifting baffles and skirts can also be added to the conveyor belt to meet various process requirements. Both sides of the conveyor are equipped with workbenches and light racks, which can be used as assembly lines for electronic instruments, food packaging, and other belt conveyors.

The belt conveyor can be driven by either a reduction motor or an electric drum.

The speed regulation methods of belt conveyor include variable frequency speed regulation and infinite speed regulation.

The materials of the belt frame include carbon steel, stainless steel, and aluminum profiles.

Application scope: Light industry, electronics, food, chemical industry, wood industry, machinery and other industries.

Characteristics of belt conveyor equipment: The belt conveyor delivers smoothly, and there is no relative movement between the material and the conveyor belt, which can avoid damage to the conveyed material. Low noise, suitable for work environments that require quietness. The structure is simple and easy to maintain. Low energy consumption and low usage cost.

Engineering specifications and parameters

1. The length of the line is calculated based on the assembly process arrangement of the product;
2. Line width: 150mm~1000mm, freely determined according to product specifications;
3. Line configuration: 1) fluorescent lamp, 2) electric fan, 3) air duct with quick change joint, 4) process drawing board, 5) workbench with 220V power socket, 6) imported conveyor belt, 7) dedicated aluminum alloy;
4. Power configuration: Domestic electromagnetic speed control/variable frequency speed control.

Customization precautions

1. The load range of the belt conveyor line, if the items exceed the load range, it will cause the entire line to malfunction;
2. Anti static coefficient: Conveyor lines are generally anti-static, and the anti-static coefficient will decrease with prolonged use. Enterprises need to clarify how long it takes to ensure that the anti-static coefficient is within a certain range before customization;
3. The number of rollers in the middle section of the conveyor line at the roller station is determined based on factors such as the length and load capacity of the line. Insufficient station capacity can also affect the normal operation of the line.



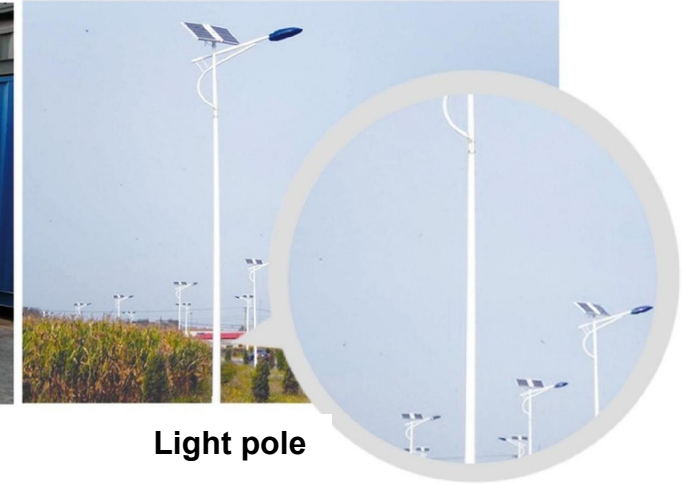
Electrostatic spray

Introduction:

Electrostatic spraying is a method of spraying that utilizes a high-voltage electrostatic field to cause negatively charged paint particles to move in the opposite direction of the field and to be adsorbed onto the surface of the workpiece. Electrostatic spraying equipment consists of a spray gun, a spray cup, and a high-voltage electrostatic power source. During operation, the paint particles in the spray gun or spray disc, spray cup are partially connected to the negative pole, while the workpiece is connected to the positive pole and grounded. Under the effect of the high voltage from the power supply, an electrostatic field is formed between the end of the spray gun (or spray disc, spray cup) and the workpiece. The electric field force acting on the paint particles is proportional to the voltage of the electrostatic field and the charge of the paint particles. It is currently one of the fastest developing and important application processes in powder coating.

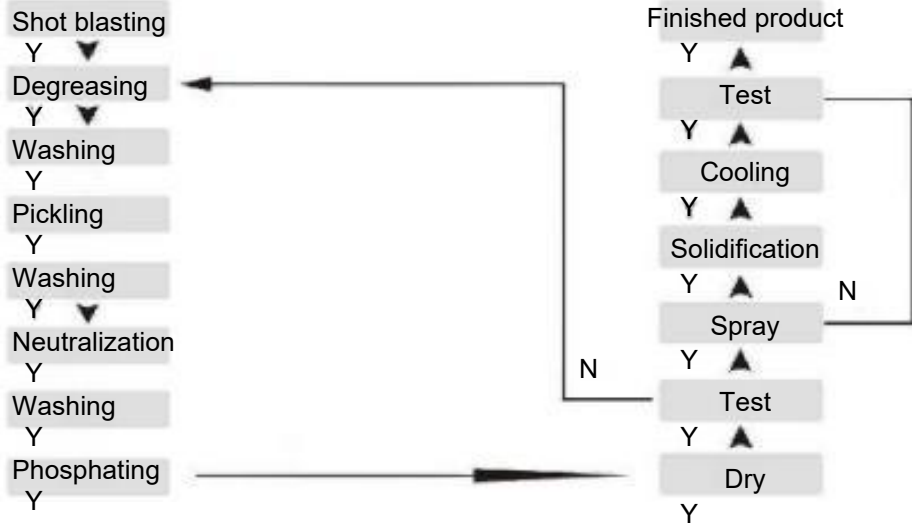


Container



Light pole

Spray painting process flow



Automobile rearview mirror

Equipment parameters:

Electrostatic spray line: 200 meters long, with a heating area of 96 meters, equipped with 14 semi-automatic spray guns, daily processing capacity can reach 3,000 square meters, ensuring sufficient support for mass production.

